



Opalescence Go Trays

Precautions and Instructions

Congratulations on your Opalescence Go Trays with 10% hydrogen peroxide bleaching agent! Please adhere to the following recommendations and precautions to ensure an optimal whitening experience.

Precautions:

- Do not use whitening products if you are under the age of 12 and keep the product out of reach of children.
- A dental examination and current set of x-rays on file is required prior to whitening. Active decay (cavities) and periodontal disease should be treated before beginning a whitening regimen.
- Do not use whitening products if you are pregnant. Consult a healthcare practitioner if you are breastfeeding.
- Do not use tobacco products or eat while whitening.
- Keep gel out of heat/sunlight. Do not freeze.
- Acidic foods/juices may cause sensitivity if consumed shortly after bleaching.
- This product is NOT for nighttime use.
- Crowns and fillings will not whiten because they are not natural tooth structure.
- Results of bleaching are not guaranteed. Occasionally, some parts of teeth may bleach faster or less evenly than others. Results may be varied. In approximately 5% of the population, teeth may be resistant to bleaching. Bleaching teeth with large metal fillings may cause the metal color to show through the teeth.

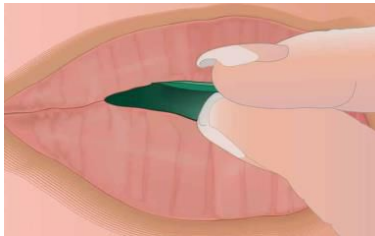
Warning: Some users may experience sensitivity or gingival irritation, which if it occurs is most often mild and transient, but in some cases may require treatment by your dentist. If you experience significant discomfort stop using this product and consult your dentist.

Please do not hesitate to call our office if you have any questions regarding your Opalescence Go Trays. Enjoy!

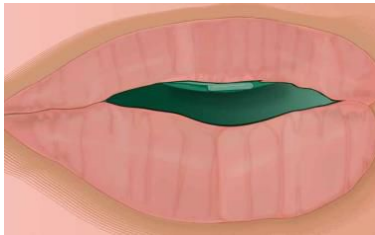
Directions for bleaching:



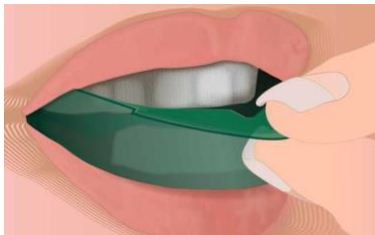
U – Upper bleaching tray L – Lower bleaching tray
Product must be refrigerated. Before using, allow product to warm to room temperature. This will make it easier for the tray to adhere to the teeth. Remove from package.



Brush your teeth prior to beginning a whitening session.
Center tray on arch.



Gently suck down on the tray.



Remove outer tray gently and lightly tap tray if needed.



Suck down or swallow again. Avoid direct contact of gel to gums.



For 10% hydrogen peroxide bleaching agent, wear your trays for 30-60 minutes per day. If significant sensitivity occurs, stop treatment.



When finished, remove bleaching trays and brush teeth with a soft bristle toothbrush. Rinse with water and DO NOT swallow the excess gel.